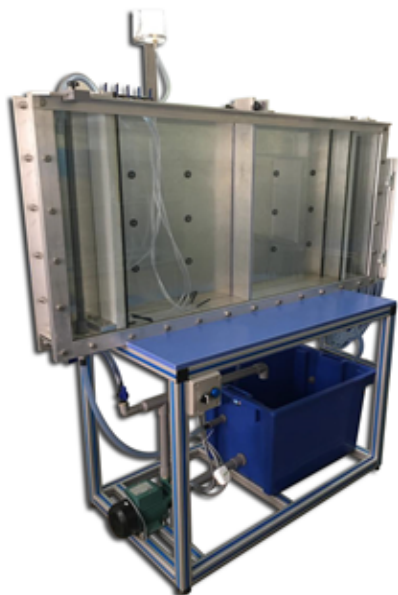


DRAINAGE AND SEEPAGE TANK

Model Number : GOTT-DAST-119



DESCRIPTION

The bed of the tank is made from painted mild steel. The sides of the tank are supported and sealed by a well proven method which allows free access to the interior and results in minimum sight obstruction.

One side is glass to give good scratch-free visibility over a long period of use while the other is made of aluminium which permits the insertion of pressure tapping points as required. The ends of the tank are made of steel plate.

Adjustable overflows are provided close to each end of the tank so that constant water levels may be maintained in each half of the tank. These may be lowered to a position close to the bed of the tank for some experiments to provide sub-soil drainage. The equipment is self-contained, requiring only an initial fill with cold water and connection to the electricity supply. The sump tank can be emptied to a laboratory drain.

PRACTICAL DEMONSTRATION AND VISUALIZATION CAPABILITIES

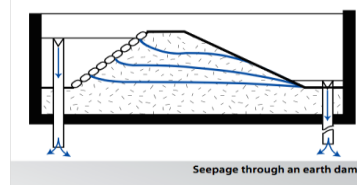
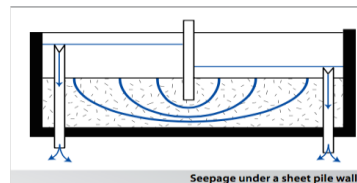
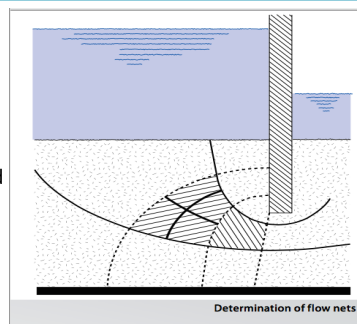
- Flow line Visualizations
- Flow net construction
- Determining seepage rates
- Comparison of experimental results with analytical solutions

ELECTRICAL SUPPLY

- 220-240V/1ph/50Hz, 1A

OVERALL DIMENSION

- Length: 1.60m
- Width: 0.60m
- Height: 1.45m



Manuals :

- (1) All manuals are written in English
- (2) Model Answer
- (3) Teaching Manuals

General Terms :

- (1) Accessories will be provided where applicable.
- (2) Manual & Training will be provided where applicable.
- (3) Design & specifications are subject to change without notice.
- (4) We reserve the right to discontinue the manufacturing of any product.

Warranty :

2 years

ORDERING INFORMATION :

ITEM	MODEL NUMBER	CODE
DRAINAGE AND SEEPAGE TANK	GOTT-DAST-119	999-119

* Proposed design only, subject to changes without any notice